

Digital line scan camera

TLC-16K5CL (Color)

TL-16K5CL (Monochrome)



(lens optional)

Applications

- Input device for pattern inspection instruments
- Inspection device applications for silicon wafers and LCD panels
- Measuring equipment such as appearance inspection device or dimensional measurement device
- Input device for sheet surface inspection systems
- Image input device for high definition image inspection
- Data entry device for image processing units employing computer

Inspection of high-density print circuit board

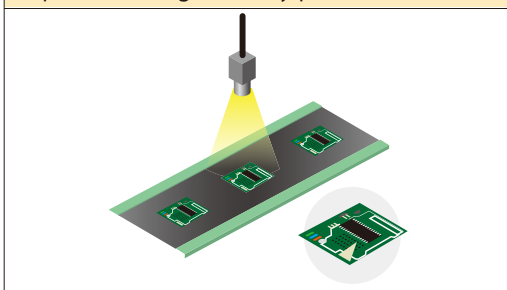
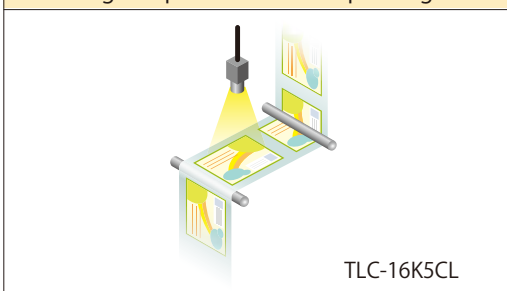
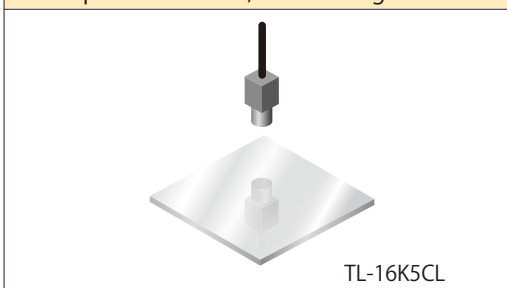


Image inspection for color printing



TLC-16K5CL

Inspection of LCD, OEL cover glass



TL-16K5CL

Overview

- High-resolution and High-speed
- Various video output combinations are achieved by selecting the transmission clocks such as 85/80/50MHz according to the system.

TLC-16K5CL (Color)

- Features RGB 3 line, 16,372 pixel CMOS linear image sensor
- 10.3kHz scan rate.
- Camera Link Medium Configuration output with 85 Hz/6TAP data rate

TL-16K5CL (Monochrome)

- Features 2 line, 16,372 pixel CMOS linear image sensor
- 38.8 kHz scan rate.
- Camera Link Full Configuration output with 85 Hz/8TAP data rate

Feature

- The large 5 μm square pixel size sensor enables to obtain high-sensitivity and high-definition images.
- Equipped with Global shutter function and FFC function.
- Small and lightweight product with unique design

TLC-16K5CL (Color)

- The narrow line spacing 5 μm makes less susceptible to the adverse effects of imaging from oblique angles.

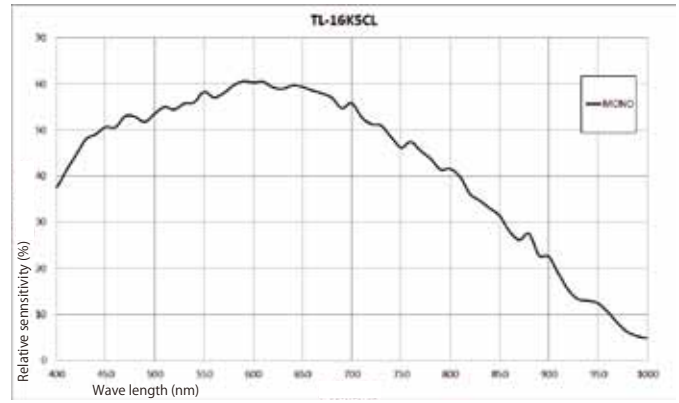
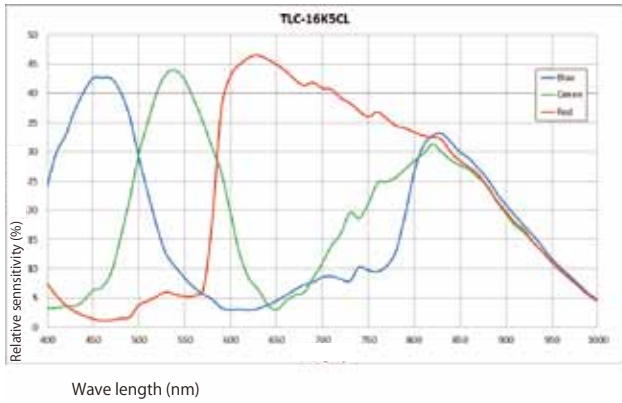
TL-16K5CL (Monochrome)

- Doubles the sensitivity by using 2 line TDI mode

Specifications

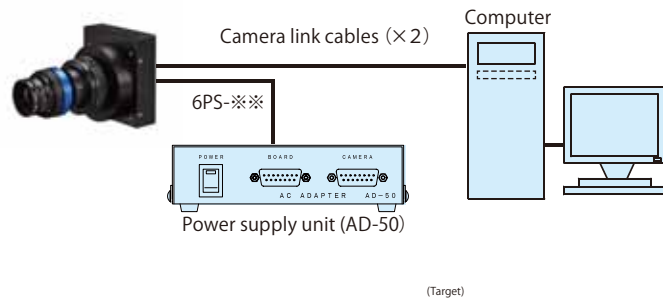
Type	TLC-16K5CL	TL-16K5CL
Image sensor	3 Line Color Global shutter CMOS	2 Line Monochrome Global shutter CMOS
Number of pixels	16,372 x 3 Line Line pitch 5 μm	16,372 x 2 Line Line pitch 10 μm
Pixel size	5 μm x 5 μm	
Photo array length	81.92 mm	
Data rate	Medium 85MHz x 6Tap	Full 85MHz x 8Tap
Scan rate	10.3 kHz	38.8 kHz
Line transfer pulse input	97.1 μsec (Min)	25.8 μsec (Min)
Digital video output	Camera Link	
Saturatin exposure	25 k e ⁻ (typical value)	
Dynamic range	65dB (on the element)	
Flange back	9.4 mm	
power supply	+12V ± 0.5V (0.8A or less)	
Lens mount	M 95, P=1mm	
Operational ambient temperature	0~40°C (with no condensation)	
External dimension	110(W) x 118(H) x 32(D)	
Weight	750g or less	

Spectral Sensitivity



Configuration Diagram

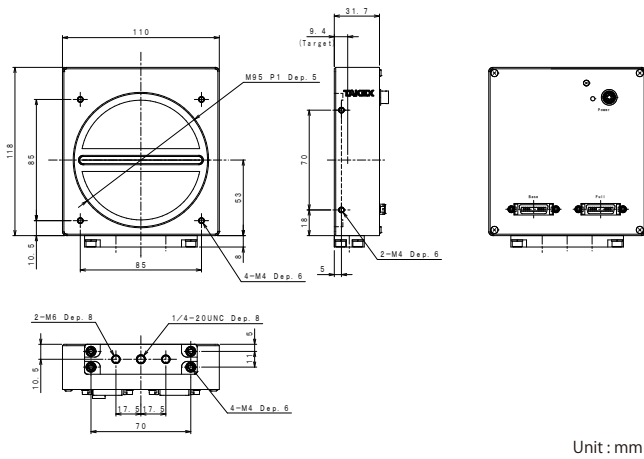
※(sold separately)



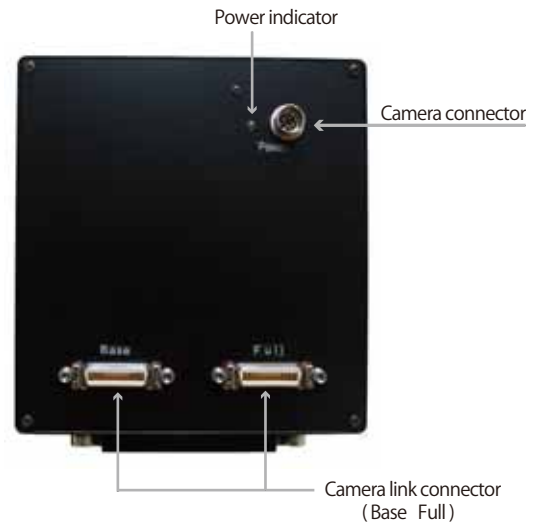
Example of Option Items



Dimensional Outline Drawing



Back Panel



- It may be changed without a notice about all items (product name, a model, specifications, external form dimensions, materials, the price) explained by this catalogue.
- We do not take responsibility about any accident damage by an error in the use of deficiency in the construction and deficiency of the maintenance check and this product, the natural disaster (surge, including lightning-induced).
- We do not take responsibility about any damage caused by use of this product or disability of this product (such as loss of business profits, business interruption, change or loss of memory contents, the cost involved in the restoration, etc.).
- About this product, our expense will be within the price of this product in any case.

TAKEX TAKENAKA SYSTEM CO., LTD.

Headoffice: 86-66, Nomizo-cho, Ohtsuka, Yamashina-ku, Kyoto City 607-8135, JAPAN

TEL: +81-75-593-9300 FAX: +81-75-593-9790

E-mail: sales@takex-system.co.jp

TAKENAKA SYSTEM URL: <https://www.takex-system.co.jp>

TAKENAKA SENSOR GROUP URL: <https://www.takex.co.jp>